

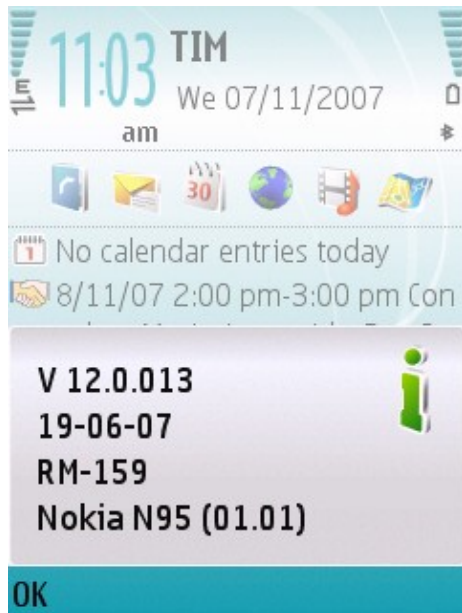
Introduction

Version 12.0.013 of Nokia N95 device added support for Assisted GPS, which allows having positioning data even where GPS signal is **poor, like when the device is surrounded by buildings or is indoor or under trees.**

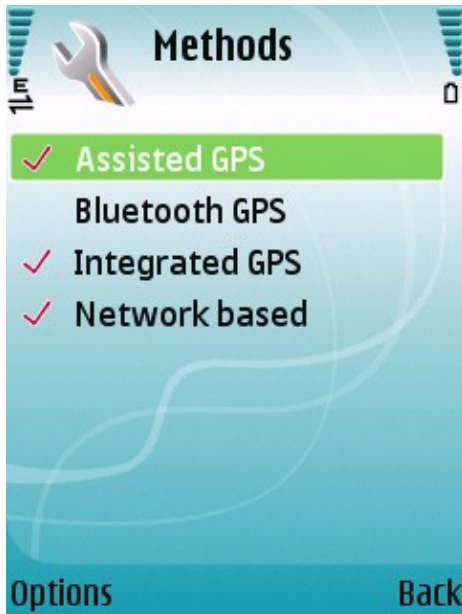
A-GPS on N95 uses device's data connection to talk to a server and help the device to get the location using network technologies such as Cell ID.

Getting started

- To enable your N95 to use A-GPS, upgrade your firmware version to the newest one (currently, V 12.0.013):



- Go to Tools / Settings / General / Positioning. Check "Positioning methods" and make sure "Assisted GPS" is selected:



- Hit "Back", click on "Positioning server", leave the "Server Address" as it is and change the "Access Point" parameter to point to your operator's Internet access point:



- Start Nokia Maps. From now on, besides using the GPS signal to locate the device, the operating system will be connecting to the network to get positioning help whenever the GPS signal becomes weak or unavailable.

EDIT FRON JONRAD89

- On my N95 swedish with 3 the servers address was: "h-slp.mnc002.mcc240.pub.3gppnetwork.org"

Changed to: "supl.nokia.com" and this was MUCH faster than the first.

Assisted_GPS_on_N95

Background regarding the default address: "mnc002.mcc240.pub.3gppnetwork.org" identifies your network operator, and is intended to provide DNS names for 3GPP services provided by your carrier. H-SLP is the service being requested, "home SUPL location platform" in this case. Network operator is intended to implement this service, but very few if any operators have actually cared to do so - obviously Nokia has decided to help phone users by providing the service over Internet for anyone that wants it. The operator-provided alternative might be slightly more accurate or have lower costs, but as long as these services are not widely supported, supl.nokia.com is a great alternative. Well-implemented positioning servers could supply less accurate (~100-5000 m accuracy) locations even without GPS (using network based positioning), but this would require knowledge only available to the operator.

Links and References

[Symbian Guru](#)

[dcrocha](#) 15:14, 7 November 2007 (EET)