

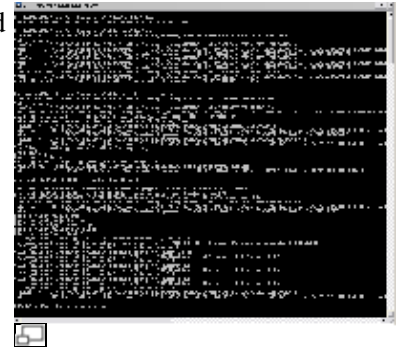
Command_line_tools

Command line (command line interface) is a means for interacting with a computer using a text terminal via command prompts. Software that implements such interface is called a command line interpreter or shell. Windows command interpreter is [cmd.exe](#).

Below is an example of how to build a [Symbian C++](#) project from command line.

```
bldmake bldfiles
abld reallyclean
abld build winscw udeb
```

Click the thumbnail image on the right to see a sample output from Windows' [cmd.exe](#).



Internal Links

- [Dos Prompt Here](#)
-