

This article is an introduction to developing Java ME applications using the Pulsar package, which includes Eclipse and Mobile Tools for Java (MTJ).

For instructions on how to develop MIDlets using EclipseME, please refer to the article Creating your first MIDlet using EclipseME.

Contents

- 1 Downloading and installing the necessary tools
- 2 Developing the MIDlet
 - ◆ 2.1 Creating a project
 - ◆ 2.2 Creating a MIDlet
- 3 Testing the MIDlet
- 4 Additional information

Downloading and installing the necessary tools

As with any version of Eclipse, a Java Runtime Environment must be present on the system in order for it to work. It can be downloaded from <http://java.sun.com/javase/downloads/index.jsp> and the Eclipse website has details about the recommended versions.

Pulsar for Mobile Java Developers must be downloaded from <http://eclipse.org/downloads/>.

An SDK is also needed. We will use the S60 3rd Edition, Feature Pack 2 v1.1 SDK provided by Forum Nokia. Instructions on how to install it are available in its ZIP package.

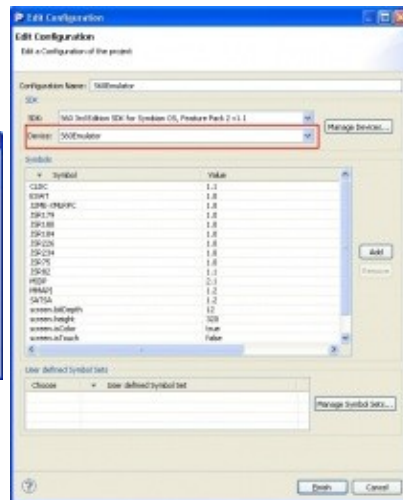
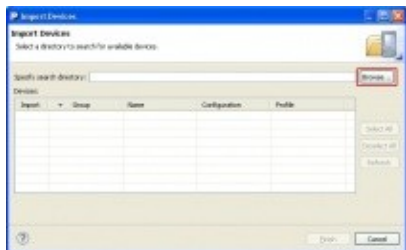
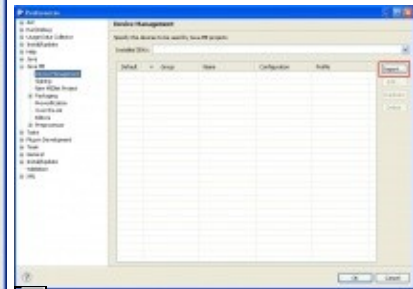
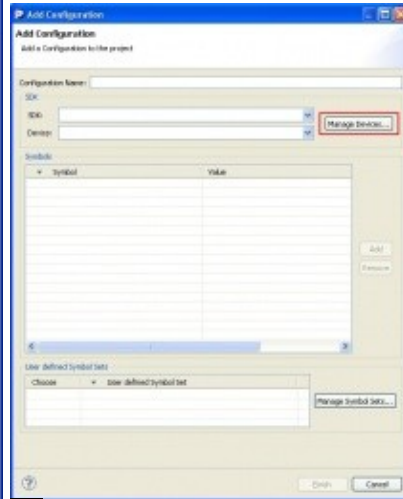
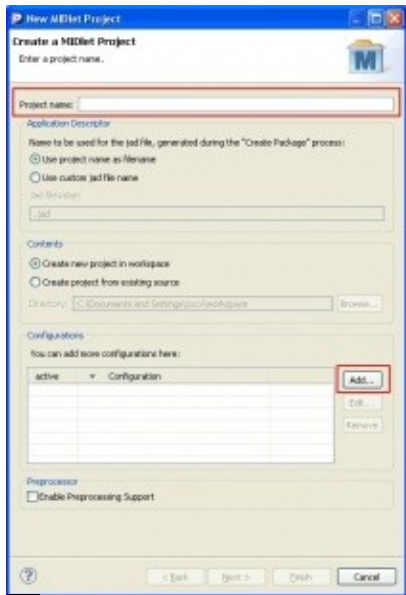
Developing the MIDlet

Creating a project

Launch Eclipse. To create a MIDlet, we must first create a project. Go to **File -> New -> MIDlet Project**. Give your project a name and click the **Add...** button to add a configuration. In the window that appears, click the **Manage Devices...** button and, in the next window, the **Import...** button. Then, in the next window, click the **Browse...** button and navigate to the SDK's installation directory (by default *C:\S60\devices\S60_3rd_FP2_SDK_v1.1*). When done, click **Finish**. In the window called "Add Configuration", select "S60Emulator" in the **Device** field. Click **Finish** until the project creation wizard is closed, and, if asked, confirm switching to the Java ME perspective.

The following images, in order, illustrate the process described above (click to enlarge):

Developing MIDlets using Pulsar and Eclipse



Creating a MIDlet

Go to **File -> New -> Java ME MIDlet**. Give it a name and click **Next>**. Here we are presented with the option to create a MIDlet using predefined templates. We will use the "Hello World MIDlet using eSWT" template. After clicking the **Finish** button, the code contained in the MIDlet file will be displayed.

Testing the MIDlet

Go to **Run -> Run As -> Emulated Java ME MIDlet** (or press **Ctrl+F11**) in order to launch the emulator and see the application in action.

You can find the JAR and JAD to deploy to your device in `\workspace\<project name>\mtj.tmp\emulation`.

Additional information

The following material may prove to be useful:

- Presentations on the Eclipse website, including future plans and tutorials