

ID	...	Creation date	15 June 2009
Platform	S60 3rd Edition FP1, S60 3rd Edition FP2, S60 5th Edition	Tested on devices	S60 Emulator
Category	Qt for S60	Subcategory	Application

Keywords (APIs, classes, methods, functions): QListWidget,QHBoxLayout

Overview

Qt's drag and drop infrastructure is fully supported by the model/view framework. Items in lists, tables, and trees can be dragged within the views, and data can be imported and exported as MIME-encoded data.

This Example show,how to perform drag and drop operation in Qt.

This exmple makes the use of following class

QListWidget-Use to list out widget

Preconditions

- Download and Install latest version [Qt for Symbian - Installation packages](#) which has links on how to install the latest version.

Function/Property

- This property holds the drag and drop event the view will act upon.

```
list->setDragDropMode(QAbstractItemView::InternalMove);
```

here in the above function we can move the item or we can manually sor the item in one list..

- This property holds the view's drag and drop behavior.

If its value is true, the selected data will overwrite the existing item data when dropped, while moving the data will clear the item.

Drag_and_drop_in_Qt

If its value is false, the selected data will be inserted as a new item when the data is dropped. When the data is moved, the item is removed as well.

```
list->setDragDropOverwriteMode ( 1 );
```

Source File

header.h

```
#include <QtGui/QWidget>
#include<QListWidget>
#include<QHBoxLayout>

class drag : public QWidget
{
    Q_OBJECT

public:
    drag(QWidget *parent = 0);
    ~drag();

private:
    QListWidget *list;
    QListWidget *list1;
    QHBoxLayout *lay;
};

#endif // DRAG_H
```

Source file

```
#include "drag.h"
#include<QAbstractItemView>
drag::drag(QWidget *parent)
    : QWidget(parent)
{
    list=new QListWidget(this);
    list->resize(0,0);
    list1=new QListWidget(this);
    lay=new QHBoxLayout(this);
    list->addItem("Nokia"); //Adding item to list
    list->addItem("Samsung");
    list->addItem("Motorola");
    list1->addItem("Nokia 6630");
    list1->addItem("5800 Xpress Music");
    list1->addItem("N96");

    list->setSelectionMode(QAbstractItemView::SingleSelection); // single item can be dragged or d
    list->setDragEnabled(true);
    list->setDragDropMode(QAbstractItemView::InternalMove);
    list->viewport()->setAcceptDrops(true);
```

Drag_and_drop_in_Qt

```
list->setDropIndicatorShown(true);

list1->setSelectionMode(QAbstractItemView::SingleSelection);
list1->setDragEnabled(true);
list1->viewport()->setAcceptDrops(true);

list1->setDropIndicatorShown(true);

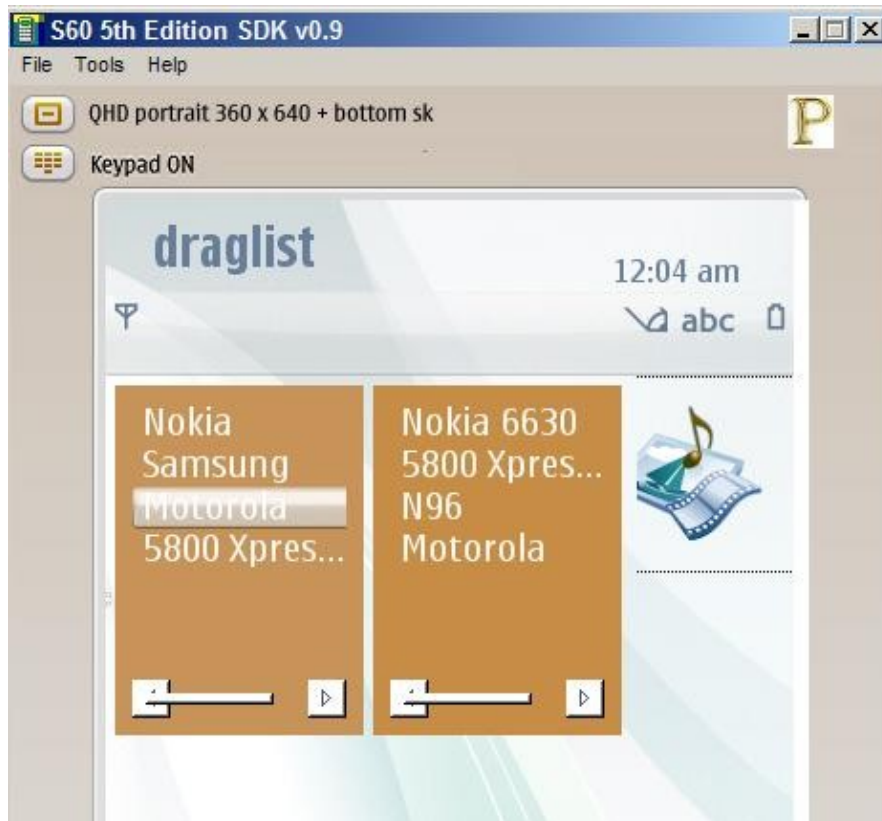
lay->addWidget(list);
lay->addWidget(list1);
setLayout(lay);
list->setStyleSheet("* { background-color:rgb(150,147,88);color:rgb(255,255,255); padding: 7px; }");
list1->setStyleSheet("* { background-color:rgb(150,140,70);color:rgb(255,255,255); padding: 7px; }");
resize(200,200);
}

drag::~~drag()
{

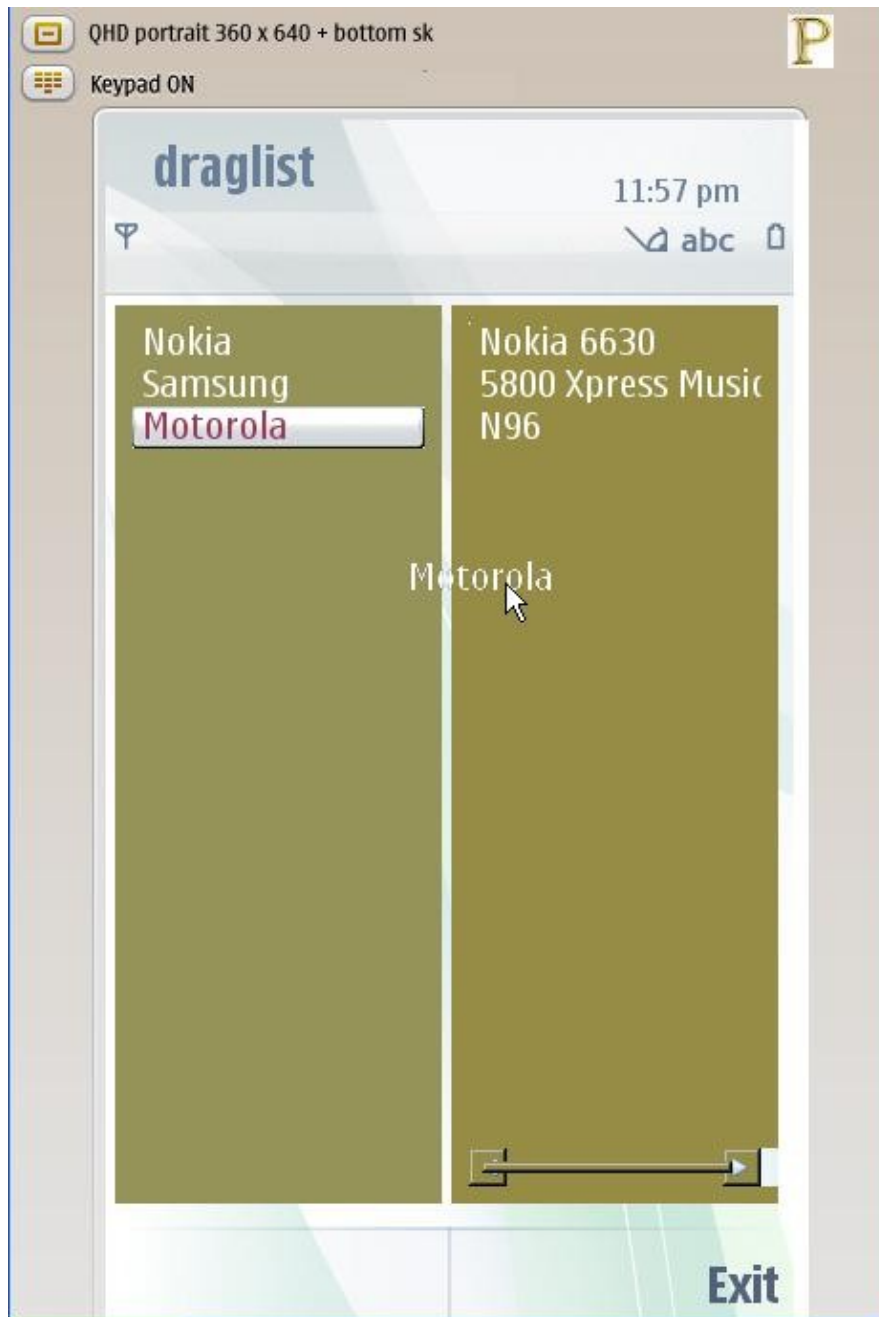
// No need to delete any object that got a parent that is properly deleted.

}
```

ScreenShot



Draging



Internal Moves

