

Introduction and external links

As an example of CVS server the BluSPAN project is used. The CVS server is upon:
bluspan.cvs.sourceforge.net

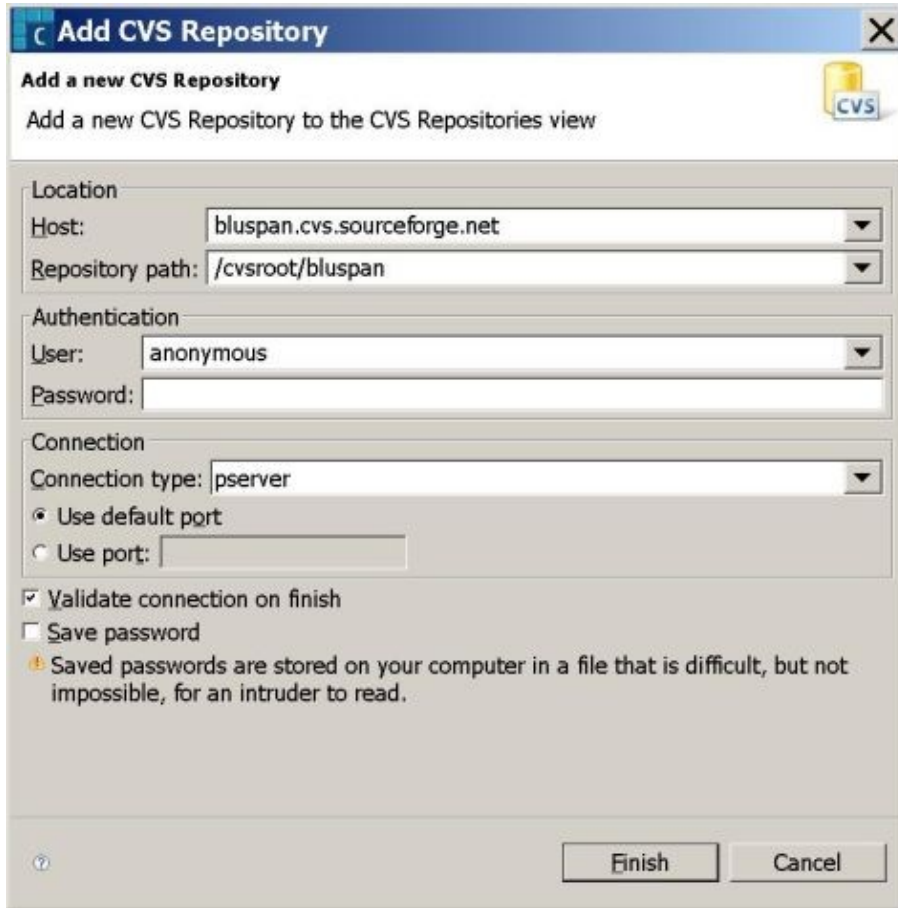
This example is originally taken from my nokia blog where bluspan project's online journal goes. [Blog is here.](#)

How to get sources from CVS to Carbide C++ workspace.

- Open new workspace in Carbide.
- Choose ?Window->Open perspective->Other->CVS Repository Exporting?
- At the left side of window (on CVS Repositories tab) click Right mouse button and choose:
?New->repository Location?.

Fill in following data:

- Host: bluspan.cvs.sourceforge.net
- Repository path: /cvsroot/bluspan
- User: anonymous
- Connection type: pserver



- After Location is created, click ?Head?, then right-button click at the project you want to get and pick ?Check out?.
- You may need then to import project: File->Import->Simbian OS Bld .inf. The Bld.inf file is usually situated at ?group? folder.