



Contents

- [1 Introduction](#)
- [2 Prerequisites](#)
- [3 Where to use](#)
- [4 How to use](#)
 - ◆ [4.1 Properties](#)
 - ◆ [4.2 Operating Method](#)
- [5 Downloads](#)
- [6 Author](#)

Introduction

The MovieController component is used to control a SWF/Movie Clip being played in Flash Lite. The user can use this component to change the current position(seek) of an executing movieclip. By moving the tract in this component, the movieclip can be controlled.

Prerequisites

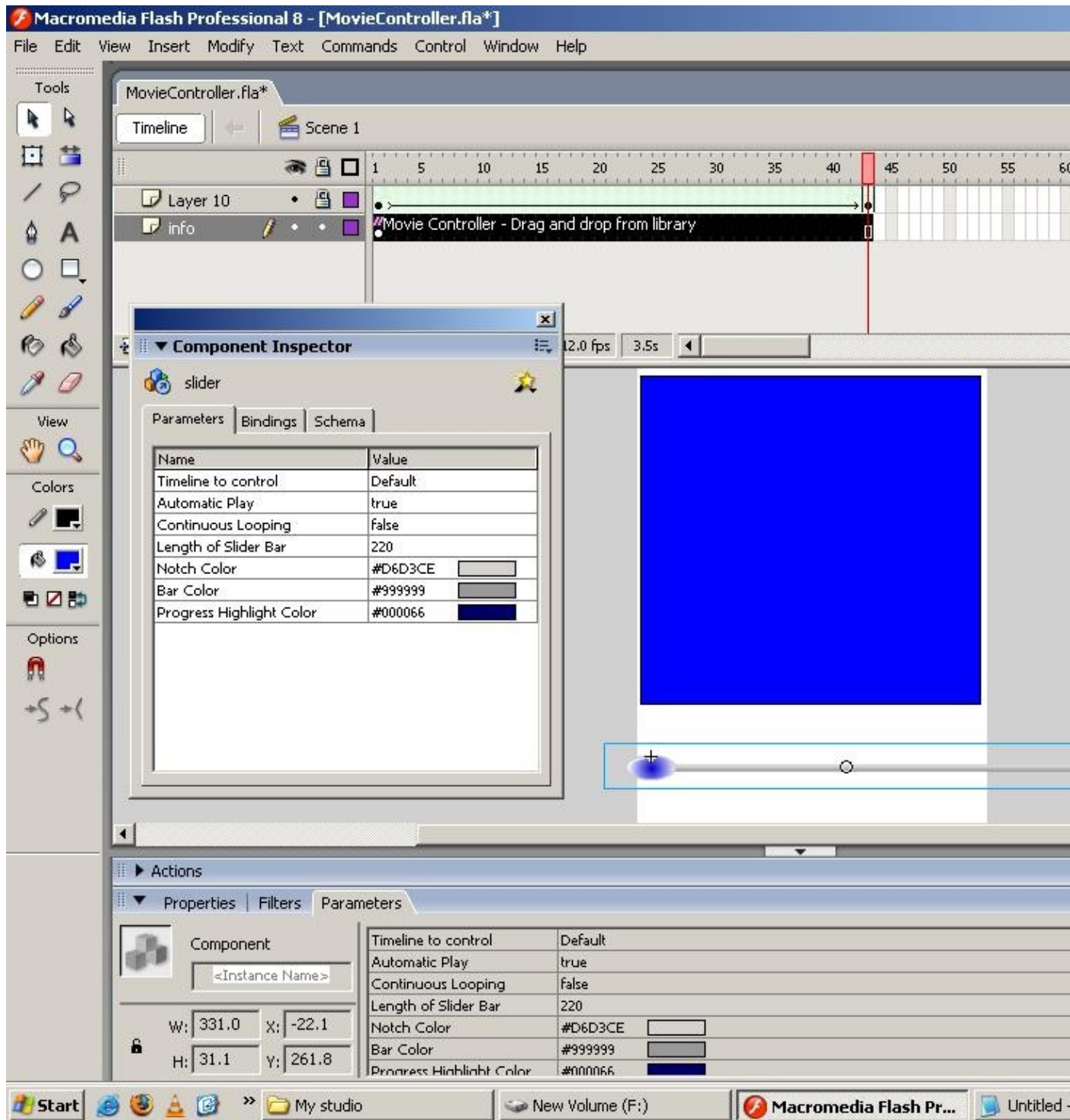
This component was developed in Flash Player 8 and ActionScript 2.0. It was tested on Nokia Xpress Music 5800.

Where to use

This component can be used in M-learning materials and Flash tutorials. The screencasts on J2ME or Flash Lite created by Forum Nokia e-learning utilise such a component. This component can be used to indicate the current playing position of movieclip and also to seek to a desired position.

How to use

Download the source file(FLA) given below. When you wish to use this component in your FLA, import this from the downloaded file, using the FILE->IMPORT->OPEN EXTERNAL LIBRARY option.



Properties

To view the properties of the component go to (Window -> Component Inspector) and select the component in the Stage.

- Timeline to control : This attribute represents the movieClip to be controlled using the slider. A

MovieClip_controller_component_in_Flash_Lite

default value means the main timeline. If the desired movieclip is something other than main timeline, provide its identifier here.

- Automatic Play : Takes Boolean values. A true values is used when playing has to continue from the changed tract position after a Drag-release.
- Continuous looping: Used to control the looping behaviour of the controlled movieClip.
- Length of Slider Bar: Denotes the physical length of slider during execution.
- Notch Color: Denotes the color of the tract. The tract color has a gradient, whose central portion is colored with this parameter. The outer periphery is colored by the BarColor attribute.
- Bar Color : Denotes the color of the slider bar.
- Progress Indicator Bar : Denotes the color that is used to indicate the progress.

Operating Method

Drag the component onto a separate layer on the Stage. On another layer, place the movieclip that you wish to control. Modify parameters suitably.

Downloads

Download the source of this component, here.[Media:MovieController.zip](#)

Author

--[Manikantan](#) 16:20, 21 June 2009 (EEST)